



## CERTIFICATE of ANALYSIS (COA)

COMMON NAME	Niaouli - Organic
LATIN NAME	<i>Melaleuca quinquenervia viridiflora</i>
COUNTRY OF ORIGIN	Madagascar
CULTIVATION METHOD	Certified Organic (USDA, NOP)
TYPE	Essential Oil
EXTRACTION METHOD	Steam Distilled
PLANT PART	Leaves
USE	Aromatherapy / Natural Perfumery

SKU	665
LOT #	17
MANUFACTURE DATE	February 2023
BEST BY DATE	February 2026

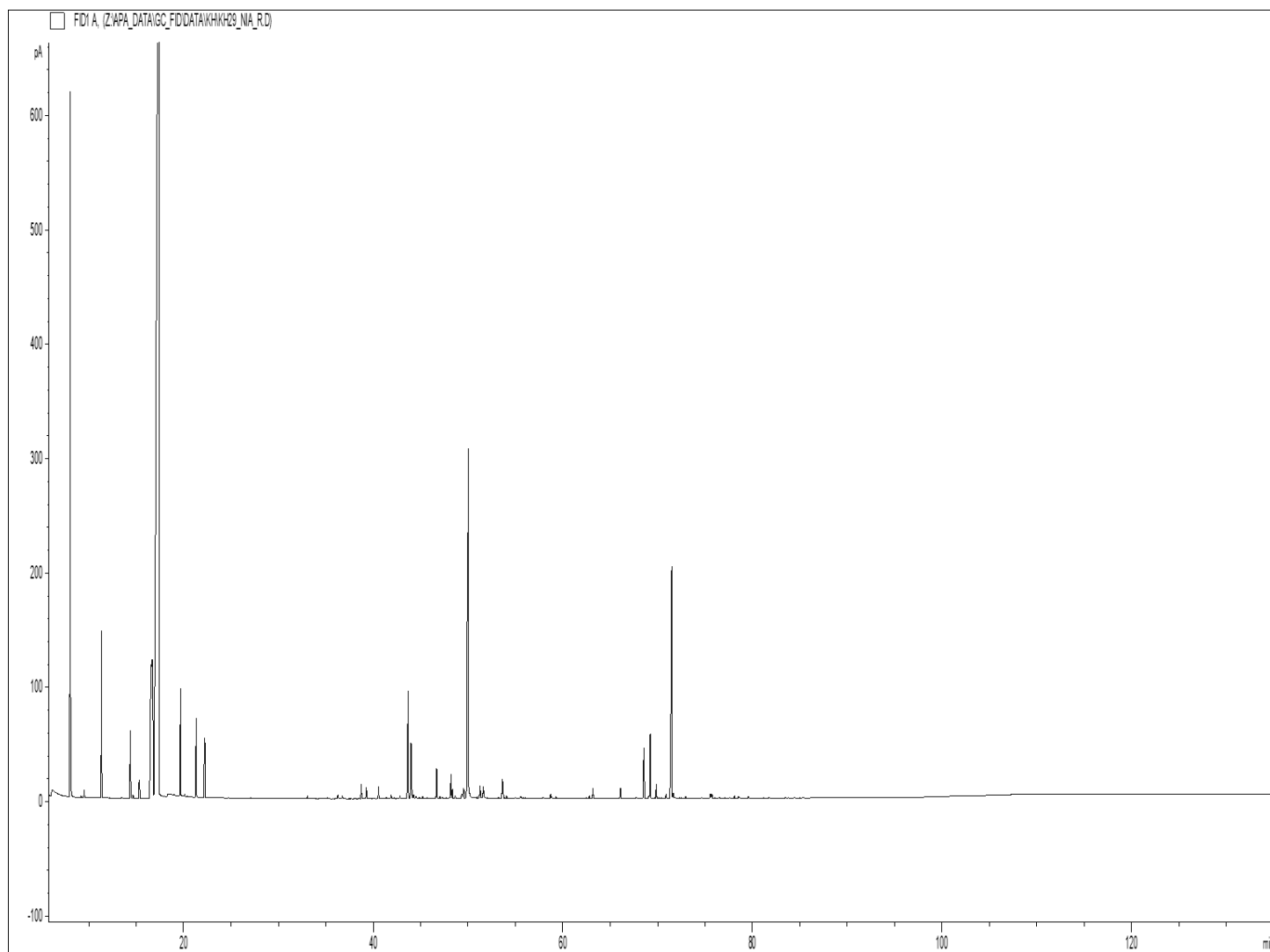
	SPECIFICATIONS (Range)	
SPECIFIC GRAVITY @20°C	0.904 – 0.925	0.914
REFRACTIVE INDEX @20°C	1.463 – 1.472	1.4669
OPTICAL ROTATION @20°C	-18° to +20°	-2.1°

PHYSICAL APPEARANCE	Clear liquid	<i>Conforms</i>
COLOR	Colorless to pale yellow	<i>Conforms</i>
ODOR	Strong, medicinal, cineolic aroma.	<i>Conforms</i>
SOLUBILITY	Soluble in alcohol and fixed oils	
SPECIAL USE INSTRUCTIONS	Dilute before use. Refrigerate to preserve freshness.	

PRIMARY CONSTITUENTS	1.8-Cineole, Limonene, Alpha-Pinene.
----------------------	--------------------------------------

# THIRD PARTY LAB ANALYSIS (GCMS)

CHROMATOGRAPHIC PROFILE :



- ORGANIC NIAOULI EO - SKU 665 LOT 17 -

Peaks	RT (min)	Compound name	%	Standard (%)	Allergens (%)
1	8.06	<b>alpha-PINENE</b>	<b>7.50</b>		
2	8.12	alpha-THUYENE	0.24		
3	9.21	alpha-FENCHENE	0.02		
4	9.53	CAMPHENE	0.08		
5	11.37	beta-PINENE	2.04		
6	11.99	SABINENE	0.02		
7	13.50	delta3-CARENE	0.02		
8	14.40	beta-MYRCENE	1.07		
9		alpha-PHELLANDRENE			
10	14.69	psi-LIMONENE	0.05		
11	15.34	alpha-TERPINENE	0.34		
12	16.60	<b>LIMONENE</b>	<b>7.21</b>		7.21
13	17.43	<b>1,8-CINEOLE</b>	<b>54.28</b>		
14	19.70	gamma-TERPINENE	1.50		
15	20.14	trans-beta-OCIMENE	0.08		
16	21.35	p-CYMENE	1.05		
17	22.23	TERPINOLENE	0.79		
18	33.05	alpha,p-DIMETHYLSTYRENE	0.04		
19	35.15	SESQUITERPENE	0.01		
20	36.30	YLANGENE	0.05		
21	36.76	alpha-COPAENE	0.05		
22	38.76	BENZALDEHYDE	0.22		
23	39.30	alpha-GURJUNENE	0.17		
24	40.58	LINALOOL	0.16		
25	41.41	ALIPHATIC ALCOHOL	0.02		
26	41.89	ISOPULEGOL	0.05		
27	42.85	FENCHOL	0.04		
28	43.32	beta-CUBEBENE	0.01		
29	43.71	beta-CARYOPHYLLENE	1.90		
30	44.02	TERPINENE-4-OL	0.92		
31	44.28	SESQUITERPENE	0.07		
32	44.55	AROMADENDRENE	0.05		
33	44.86	SESQUITERPENE	0.03		
34	45.22	METHYL BENZOATE	0.03		
35	45.49	MYRTENAL	0.01		
36	45.71	cis-p-MENTHA-2,8-DIEN-1-OL	0.01		
37	46.71	ALLO-AROMADENDRENE	0.45		
38	47.06	delta-TERPENYL ACETATE	0.03		
39	47.25	SESQUITERPENE	0.02		
40	47.70	SESQUITERPENE	0.02		
41	48.21	alpha-HUMULENE	0.37		
42	48.37	delta-TERPINEOL	0.14		
43	48.67	gamma-SELINENE	0.06		

- ORGANIC NIAOULI EO - SKU 665 LOT 17 -

Peaks	RT (min)	Compound name	%	Standard (%)	Allergens (%)
44	49.35	LAVANDULAL	0.09		
45	49.55	SESQUITERPENE	0.18		
46	49.96	<b>TERPENYL ACETATE</b>	<b>9.49</b>		
47		<b>alpha-TERPINEOL</b>			
48	50.98	SESQUITERPENE	0.02		
49	51.28	beta-SELINENE	0.21		
50	51.42	SESQUITERPENE	0.01		
51	51.63	alpha-SELINENE	0.26		
52	51.86	alpha-MUUROLENE	0.02		
53	53.22	SESQUITERPENE	0.02		
54	53.65	delta-CADINENE	0.45		
55		gamma-CADINENE			
56	54.09	CITRONELLOL	0.04		0.04
57	55.03	CADINA-1,4-DIENE	0.02		
58	55.55	MYRTENOL	0.03		
59	55.64	SESQUITERPENE	0.03		
60	56.04	NEROL	0.01		
61	57.98	CALAMENENE	0.02		
62	58.72	p-CYMENE-8-OL	0.06		
63	58.84	GERANIOL	0.03		0.03
64	59.29	EXO-2-HYDROXYCINEOLE	0.03		
65	62.50	METHYL THIO BENZOATE	0.02		
66	62.82	beta-CALACORENE	0.04		
67	63.19	PALUSTROL	0.15		
68	66.09	CARYOPHYLLENE OXIDE	0.17		
69	67.75	SESQUITERPENOL	0.02		
70	68.57	LEDOL	0.80		
71	69.09	COMPOUND Mw=220	0.03		
72	69.23	NEROLIDOL	0.91		
73	69.87	GLEENOL	0.21		
74	70.12	Epi-CUBENOL	0.02		
75	70.43	CUBENOL	0.02		
76	70.91	GLOBULOL	0.07		
77	71.50	<b>VIRIDIFLOROL</b>	<b>4.73</b>		
78	71.67	GUAIOL	0.09		
79	72.97	10-epi-gamma-EUDESOL	0.04		
80	74.09	SESQUITERPENOL	0.01		
81	74.64	COMPOUND Mw=220	0.01		
82	75.56	EUGENOL	0.08		0.08
83	75.73	T-CADINOL	0.07		
84	76.50	alpha-MUUROLOL	0.02		
85	77.63	SESQUITERPENOL	0.01		
86	78.12	alpha-EUDESOL	0.03		

- ORGANIC NIAOULI EO - SKU 665 LOT 17 -

Peaks	RT (min)	Compound name	%	Standard (%)	Allergens (%)
87	78.55	beta-EUDESOL	0.04		
88	78.64	SESQUITERPENOL	0.02		
89	79.60	CARYOPHYLLA-2,6-DIEN-5-alpha-OL	0.03		
90	83.50	SESQUITERPENOL	0.02		
91	84.37	SESQUITERPENOL	0.02		
		<b>TOTAL</b>	<b>99.89</b>		<b>7.36</b>

This Essential Oil is a 100% pure and natural product. It does not contain any artificial ingredients or adulteration of any kind to the best of our knowledge. The analysis and statements herein constitute the most complete information available to Eden Botanicals. This product is guaranteed by Eden Botanicals to be of excellent quality.

Eden Botanicals

[www.edenbotanicals.com](http://www.edenbotanicals.com)

info@edenbotanicals.com

T: 1-707-509-0041 / F: 1-707-949-2526

Document created: 07.09.18

Document updated: 11.02.23