



## CERTIFICATE of ANALYSIS (COA)

<b>COMMON NAME</b>	Immortelle Absolute
<b>LATIN NAME</b>	<i>Helichrysum italicum</i>
<b>COUNTRY OF ORIGIN</b>	France
<b>CULTIVATION METHOD</b>	Conventional
<b>TYPE</b>	Absolute
<b>EXTRACTION METHOD</b>	Solvent Extracted
<b>PLANT PART</b>	Flowers
<b>USE</b>	Natural Perfumery

<b>SKU</b>	435
<b>LOT #</b>	22
<b>MANUFACTURING DATE</b>	August 2023
<b>BEST BY DATE</b>	August 2028

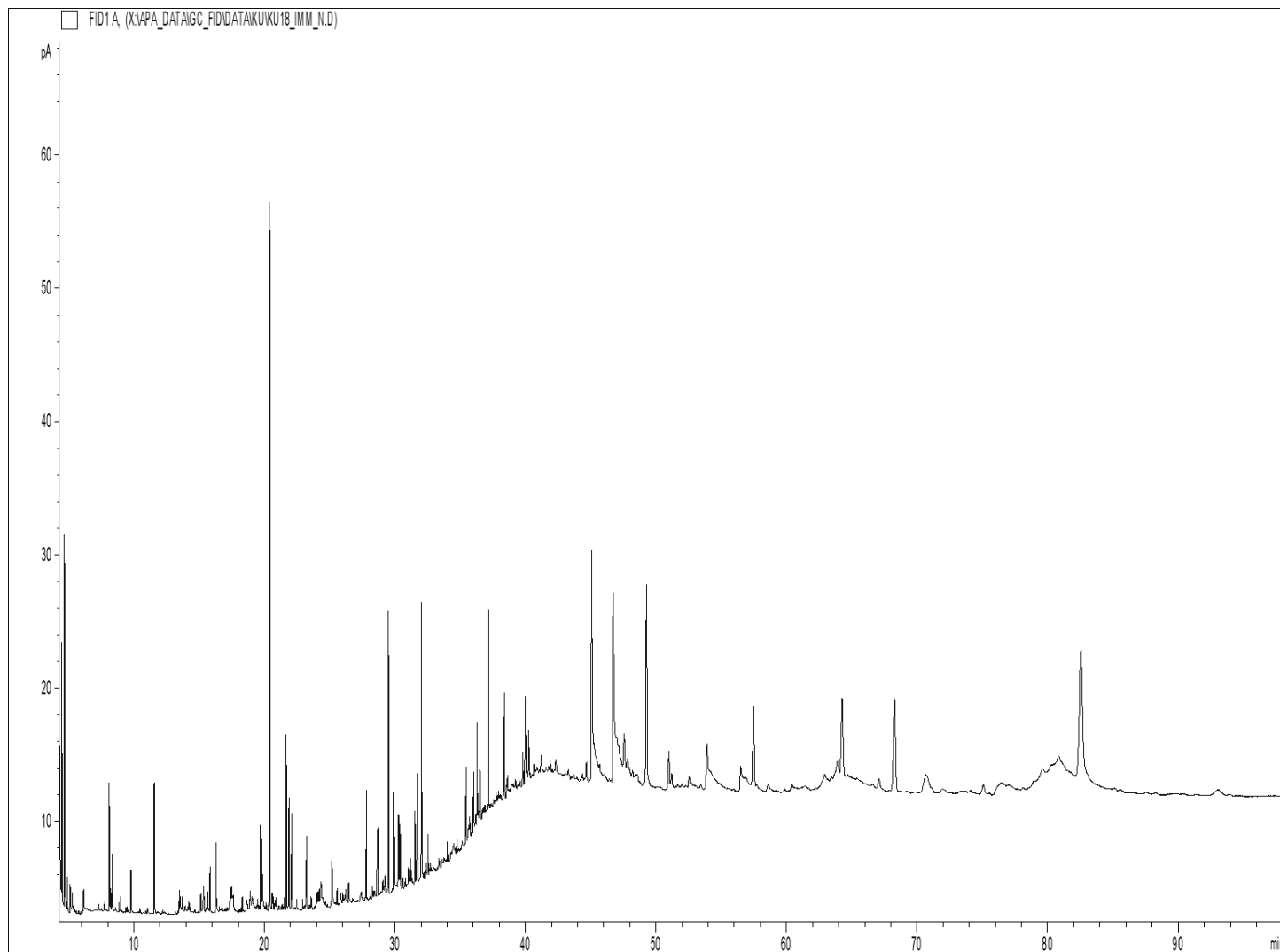
	<b>SPECIFICATIONS (Range)</b>	
<b>SPECIFIC GRAVITY @20°C</b>	<i>na</i>	<i>na</i>
<b>REFRACTIVE INDEX @20°C</b>	<i>na</i>	<i>na</i>
<b>OPTICAL ROTATION @20°C</b>	<i>na</i>	<i>na</i>

<b>PHYSICAL APPEARANCE</b>	Viscous liquid, solid at room temperature.	<i>Conforms</i>
<b>COLOR</b>	Reddish yellow to dark brown	<i>Conforms</i>
<b>ODOR</b>	Sweet, hay-like, honeyed, herbaceous, with a smoky musk-tobacco undertone.	<i>Conforms</i>
<b>SOLUBILITY</b>	Soluble in alcohol. Insoluble in fixed oils.	
<b>SPECIAL USE INSTRUCTIONS</b>	Dilute before use. May require gentle heating to liquefy.	

<b>COMMENTS</b>	Odor quality is excellent.
-----------------	----------------------------

# THIRD PARTY LAB ANALYSIS (GCMS)

CHROMATOGRAPHIC PROFILE :



- IMMORTELLE ABS - SKU 435 LOT 22 -

Peaks	RT (min)	Compound name	%	Standard (%)	Allergens (%)
1	4.48	ETHYL ACETATE	1.67		
2	4.68	<b>ETHANOL</b>	<b>2.68</b>		
3	4.89	ALIPHATIC ESTER	0.19		
4	5.12	3-PENTANONE	0.21		
5	5.28	3-HEXANONE	0.13		
6	6.16	3-HEXANONE, 4-METHYL-	0.18		
7	8.11	LIMONENE	0.88		0.88
8	8.24	cis-ARBUSCULON	0.16		
9	8.34	1,8-CINEOLE	0.37		
10	8.98	gamma-TERPINENE	0.12		
11	9.78	TERPINOLENE	0.29		0.29
12	11.57	4-METHYL-2-PENTANONE, 4-HYDROXY-	0.95		
13	13.52	TERPENIC COMPOUND	0.32		
14	13.72	ACETIC ACID	0.13		
15	13.94	ALIPHATIC ESTER	0.09		
16	14.20	NERYL OXIDE	0.12		
17	15.14	ISOITALICENE	0.18		
18	15.37	ALIPHATIC ESTER	0.39		
19	15.62	CAMPHOR	0.47		0.47
20	15.85	LINALOOL	0.34		0.34
21	16.32	ITALICENE	0.57		
22	16.75	alpha-cis-BERGAMOTENE	0.11		
23	17.24	OCTANE-4,6-DIONE, 3,5-DIMETHYL-	0.87		
24	17.42	TERPENIC COMPOUND	0.12		
25	17.51	TERPENIC COMPOUND	0.10		
26	18.32	SESQUITERPENE	0.12		
27	18.68	ALIPHATIC ESTER	0.17		
28	18.91	ALIPHATIC ESTER	0.35		
29	19.05	ALIPHATIC ESTER	0.46		
30	19.50	SESQUITERPENE	0.14		
31	19.74	gamma-CURCUMENE	2.08		
32	19.86	alpha-TERPINEOL	0.40		0.40
33	20.14	SESQUITERPENE	0.11		
34	20.41	<b>NERYL ACETATE</b>	<b>5.11</b>		
35	20.60	EREMOPHILENE	0.15		
36	20.67	ALIPHATIC ESTER	0.17		
37	20.90	beta-CURCUMENE	0.17		
38	21.53	delta-CADINENE	0.12		
39	21.68	alpha-CURCUMENE	1.37		
40	21.89	NERYL PROPIONATE	0.87		
41	22.09	NEROL	0.92		
42	22.48	COMPOUND Mw=210	0.11		
43	22.94	ALIPHATIC ESTER	0.09		

- IMMORTELLE ABS - SKU 435 LOT 22 -

Peaks	RT (min)	Compound name	%	Standard (%)	Allergens (%)
44	23.20	ALCOHOL COMPOUND	0.34		
45	23.25	ETHYL LAURATE	0.56		
46	23.60	ALIPHATIC ESTER	0.16		
47	24.06	COMPOUND Mw=218	0.23		
48	24.12	TERPENIC COMPOUND	0.11		
49	24.19	TERPENIC COMPOUND	0.17		
50	24.35	ITALIDIONE I	0.67		
51	24.49	ITALIDIONE II	0.18		
52	25.18	ALIPHATIC ESTER	0.65		
53	25.58	ALIPHATIC ESTER	0.13		
54	25.84	ALIPHATIC ESTER	0.18		
55	26.00	ALIPHATIC ESTER	0.14		
56	26.24	ITALIDIONE III	0.14		
57	26.48	COMPOUND Mw=200	0.28		
58	27.44	OXYGENED COMPOUND	0.23		
59	27.82	ETHYL MYRISTATE	0.85		
60	28.29	p-CRESOL	0.15		
61	28.44	ALIPHATIC ESTER	0.16		
62	28.65	AROMATIC COMPOUND	0.56		
63	28.70	GUAIOL	0.57		
64	28.96	AROMATIC COMPOUND	0.12		
65	29.09	AROMATIC COMPOUND	0.25		
66	29.27	AROMATIC COMPOUND	0.26		
67	29.52	EUDESMA-5-EN-11-alpha-OL	2.37		
68	29.93	COMPOUND Mw=208	2.01		
69	30.29	7-epi-beta-EUDES MOL	0.83		
70	30.40	gamma-EUDES MOL	0.70		
71	30.60	TERPENIC COMPOUND	0.14		
72	30.82	SESQUITERPENOL	0.14		
73	31.04	SESQUITERPENOL	0.27		
74	31.12	CARVACROL	0.11		
75	31.22	BULNESOL	0.29		
76	31.55	alpha-EUDES MOL	0.64		
77	31.72	beta-EUDES MOL	1.02		
78	32.04	ETHYL PALMITATE	2.43		
79	32.41	CAPRIC ACID	0.17		
80	32.56	OXYGENED COMPOUND	0.35		
81	32.74	OXYGENED COMPOUND	0.17		
82	33.01	AROMATIC COMPOUND	0.10		
83	33.39	OXYGENED COMPOUND	0.16		
84	33.63	OXYGENED COMPOUND	0.13		
85	33.78	AROMATIC COMPOUND	0.15		
86	34.02	ETHYL HEPTADECANOATE	0.17		

- IMMORTELLE ABS - SKU 435 LOT 22 -

Peaks	RT (min)	Compound name	%	Standard (%)	Allergens (%)
87	34.32	OXYGENED COMPOUND	0.17		
88	34.45	OXYGENED COMPOUND	0.18		
89	34.52	AROMATIC COMPOUND	0.24		
90	34.76	COMPOUND Mw=222	0.19		
91	35.14	OXYGENED COMPOUND	0.09		
92	35.46	AROMATIC COMPOUND	0.64		
93	35.66	AROMATIC COMPOUND	0.17		
94	35.74	OXYGENED COMPOUND	0.28		
95	35.93	AROMATIC COMPOUND	0.30		
96	36.04	ETHYL STREARATE	0.59		
97	36.21	OXYGENED COMPOUND	0.18		
98	36.31	ETHYL OLEATE	0.74		
99	36.33	LAURIC ACID	0.24		
100	36.51	AROMATIC COMPOUND	0.33		
101	36.55	AROMATIC COMPOUND	0.47		
102	36.73	AROMATIC COMPOUND	0.10		
103	36.81	AROMATIC COMPOUND	0.10		
104	37.16	ETHYL LINOLEATE	1.69		
105	37.77	AROMATIC COMPOUND	0.13		
106	37.94	OXYGENED COMPOUND	0.09		
107	38.39	ETHYL LINOLENATE	0.97		
108	38.57	PHYTOL	0.10		
109	38.65	AROMATIC COMPOUND	0.22		
110	39.81	ALIPHATIC ESTER Mw=340	0.31		
111	40.00	MYRISTIC ACID	0.98		
112	40.26	COMPOUND Mw=218	0.49		
113	40.66	AROMATIC COMPOUND	0.12		
114	41.21	AROMATIC COMPOUND	0.18		
115	41.91	AROMATIC COMPOUND	0.14		
116	42.33	PENTADECANOIC ACID	0.21		
117	43.05	AROMATIC COMPOUND	0.09		
118	43.97	TERPENIC COMPOUND	0.10		
119	44.38	TERPENIC COMPOUND	0.19		
120	44.69	ALIPHATIC ESTER	0.39		
121	45.09	<b>PALMITIC ACID</b>	<b>4.98</b>		
122	46.73	<b>AROMATIC COMPOUND</b>	<b>7.89</b>		
123	47.57	AROMATIC COMPOUND	0.69		
124	49.28	<b>AROMATIC COMPOUND Mw=216</b>	<b>3.81</b>		
125	51.00	AROMATIC COMPOUND Mw=290	0.82		
126	51.22	SQUALENE	0.32		
127	53.92	ACID COMPOUND	1.35		
128	56.50	ACID COMPOUND	0.64		
129	57.47	AROMATIC COMPOUND	2.00		

- IMMORTELLE ABS - SKU 435 LOT 22 -

Peaks	RT (min)	Compound name	%	Standard (%)	Allergens (%)
130	58.57	TERPENIC COMPOUND	0.19		
131	60.41	AROMATIC COMPOUND	0.16		
132	62.95	AROMATIC COMPOUND	0.11		
133	63.91	ALKAN COMPOUND	0.47		
134	64.27	AROMATIC COMPOUND	2.34		
135	67.11	AROMATIC COMPOUND	0.29		
136	68.28	<b>AROMATIC COMPOUND</b>	<b>3.26</b>		
137	70.70	AROMATIC COMPOUND	1.65		
138	75.09	AROMATIC COMPOUND	0.36		
139	79.66	OXYGENED COMPOUND	0.25		
140	80.87	OXYGENED COMPOUND	0.20		
141	82.57	<b>AROMATIC COMPOUND</b>	<b>7.05</b>		
		<b>TOTAL</b>	<b>94.19</b>		<b>2.38</b>

This Absolute is a 100% pure and natural product and does not contain any artificial ingredients or adulteration of any kind to the best of our knowledge. The analysis and statements herein constitute the most complete information available to Eden Botanicals. This product is guaranteed by Eden Botanicals to be of excellent quality.

Eden Botanicals  
[www.edenbotanicals.com](http://www.edenbotanicals.com)  
 info@edenbotanicals.com  
 T: 1-707-509-0041 / F: 1-707-949-2526  
 Document created: 01.03.19  
 Document updated: 03.28.24