



CERTIFICATE of ANALYSIS (COA)

| | |
|--------------------|------------------------|
| COMMON NAME | Cocoa Absolute |
| LATIN NAME | <i>Theobroma cacao</i> |
| COUNTRY OF ORIGIN | Manufactured in France |
| CULTIVATION METHOD | Conventional |
| TYPE | Absolute |
| EXTRACTION METHOD | Solvent Extracted |
| PLANT PART | Seeds |
| USE | Natural Perfumery |

| | |
|--------------------|------------|
| SKU | 240 |
| LOT # | 31 |
| MANUFACTURING DATE | April 2021 |
| BEST BY DATE | April 2026 |

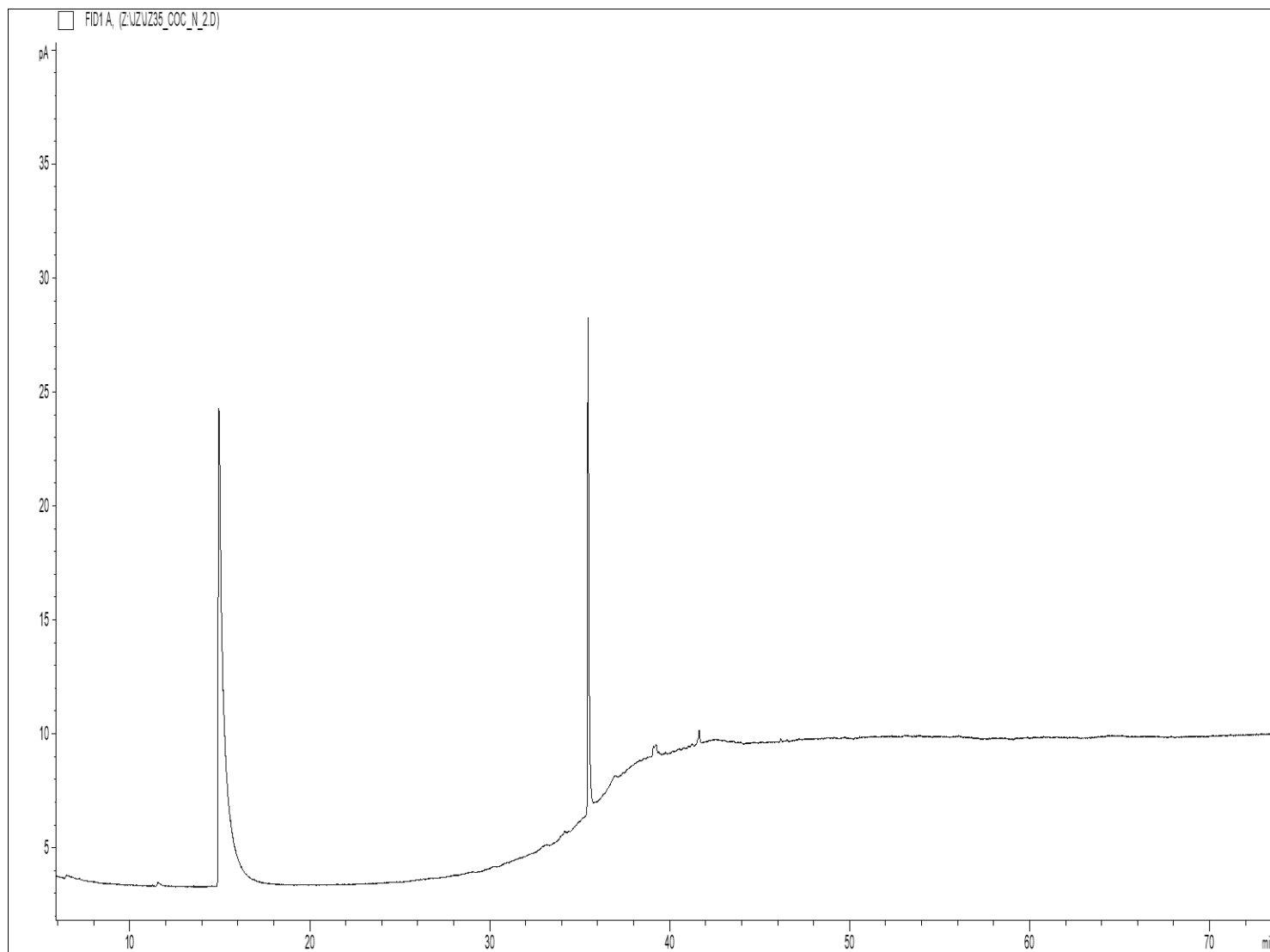
| | | |
|------------------------|-------------------------------|--------|
| | SPECIFICATIONS (Range) | |
| SPECIFIC GRAVITY @20°C | na | na |
| REFRACTIVE INDEX @20°C | na | 1.4574 |
| OPTICAL ROTATION @20°C | na | na |

| | | |
|--------------------------|-------------------------------|----------|
| PHYSICAL APPEARANCE | Semi-viscous liquid | Conforms |
| COLOR | Dark brown | Conforms |
| ODOR | Sweet, warm, typical of Cacao | Conforms |
| SOLUBILITY | Soluble in alcohol | |
| SPECIAL USE INSTRUCTIONS | Dilute before use | |

| | |
|----------------------|--|
| PRIMARY CONSTITUENTS | Alcohol (<2%), Vanillin (<1.9%), Propylene Glycol (<50%) |
|----------------------|--|

THIRD PARTY LAB ANALYSIS (COA)

CHROMATOGRAPHIC PROFILE:



| - COCAO ABS - SKU 240 LOT 31 - | | | | | |
|--------------------------------|----------|-------------------------|--------------|--------------|---------------|
| Peaks | RT (min) | Compound name | % | Standard (%) | Allergens (%) |
| 1 | 11.58 | AROMATIC COMPOUND | 0.32 | | |
| 2 | 14.95 | PROPYLENE GLYCOL | 77.44 | | |
| 3 | 35.46 | VANILLIN | 20.34 | | |
| 4 | 39.24 | AROMATIC COMPOUND | 1.15 | | |
| 5 | 41.64 | CAFFEINE | 0.61 | | |
| | | TOTAL | 99.86 | | 0.00 |

This Absolute is a 100% pure and natural product and does not contain any artificial ingredients or adulteration of any kind to the best of our knowledge. The analysis and statements herein constitute the most complete information available to Eden Botanicals. This product is guaranteed by Eden Botanicals to be of excellent quality.

Eden Botanicals

www.edenbotanicals.com

info@edenbotanicals.com

T: 1-707-509-0041 / F: 1-707-949-2526

Document created: 02.20.19

Document updated: 06.13.23